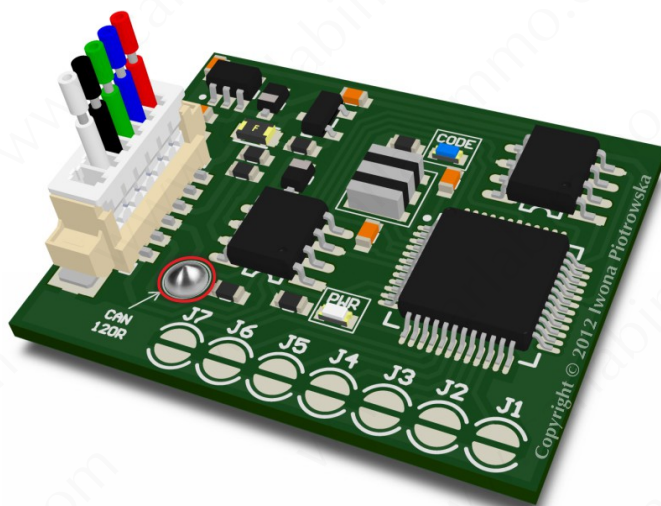




Tachometer tester programs



SOLD AS UNIVERSAL JULIE EMULATOR

Use

You can use it to turn on the instrument cluster on the table in order to diagnose faults. After connecting the emulator to instrument cluster, most of instrument cluster segments are displayed making it easier to locate damaged areas.

Emulator is reusable!

Tested on tacho:

Audi Q7 and A6

Citroen C4 Picasso

EMF Display

Renault Kangoo 3 Display

Renault Scenic II, Espace IV Tacho

Renault Scenic II Full

Renault Scenic III + Navi

VW Passat B6

1. Audi Q7 and A6



In Universal Julie emulator solder jumpers: CAN 120R, J2, J4 and J6

Connecting to grey socket

+12V

GND

CAN H

CAN L

pin 15

pin 14

pin 2

pin 1

2. Citroen C4 Picasso



In Universal Julie emulator solder jumpers: CAN 120R, J1, J2, J4 and J6

Connecting to yellow socket

+12V

pin 26

GND

pin 23

CAN H

pin 9

CAN L

pin 13

3. EMF Display



In Universal Julie emulator solder jumpers: CAN 120R, J3, J4 and J6

Connecting to brown socket

+12V

pin 1

GND

pin 3

CAN H

pin 9

CAN L

pin 7

4. Renault Kangoo III Display



In Universal Julie emulator solder jumpers: CAN 120R, J1, J3, J4 and J6

Connecting to display socket

+12V

pin 3

GND

pin 12

CAN H

pin 16

CAN L

pin 15

5. Renault Scenic II, Espace IV Tacho



In Universal Julie emulator solder jumpers: CAN 120R, J1, J2, J4 and J5
Connecting to grey socket

+12V

pin 1

GND

pin 2

CAN H

pin 30

CAN L

pin 29

6. Renault Scenic II, Espace IV Full



In Universal Julie emulator solder jumpers: CAN 120R, J4 and J6

Connecting to grey socket

+12V

GND

CAN H

CAN L

pin 1

pin 2

pin 30

pin 29

7. Renault Scenic III + Navi

In Universal Julie emulator solder jumpers: CAN 120R, J1, J4 and J6

Connecting to grey socket of tach

+12V

GND

CAN H

CAN L

pin 2

pin 3

pin 12

pin 11

8. VW Passat B6



In Universal Julie emulator solder jumpers: CAN 120R, J1, J2, J3, J4 and J6

Connecting to blue socket

+12V

GND

CAN H

CAN L

pin 31

pin 16

pin 28

pin 29

Warning!!!

Due to possible construction changes of cars check signals with
multimeter in the ECU plug.

We state that we are the only authentic authors of this manual. We possess copyright of this publication. All rights reserved. Unauthorized copying, hiring, lending, public performance will be punished!!! Any trials of unauthorized copying, hiring, quoting prohibited!!! Both service and advertisement constitute copyright and they are the subject to the protection in accordance with the Act from 4th Feb. 1994 on Copyright and Related Laws (Statute Book no. 24 position 93) and protection on the basis of the Act from 8th June 1993 on combating an unfair competition (Statute Book no. 47 position 211)

www.carlabimmo.com

Last updated 05.11.2014