

---

# Porsche

Select the model:

**Model 928**

**Model Boxter before model 2000**

**Model Boxter after model 2000**

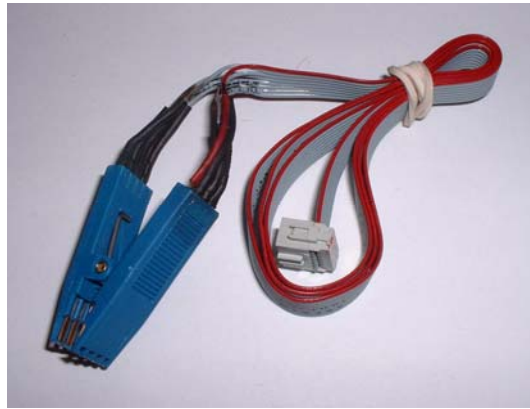
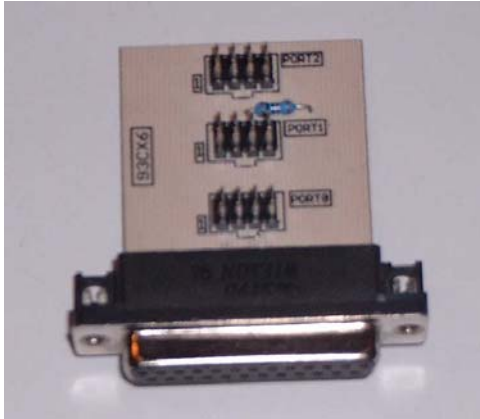
**Model 996 before model 2000**

**Model 996 after model 2000**

---

## **Model 928**

Use this board and clip:



- Remove the cluster and open it.
- Look for the 8 pin chip 93C46.
- Look for the silver chrystal and join its contacts.
- Put the clip on the chip 93C46 (red on pin 1).
- Connect the clip to port 1.
- Select the menu **Porsche-928**
- The Tacho Universal shows you the old value.
- Select the menu **Adjust KM.**
- Enter the new value.
- Verify the new value with **OK.**

---

## **Model Boxter before model 2000**

Diagnostic programming

Use the OBD II - Plug:



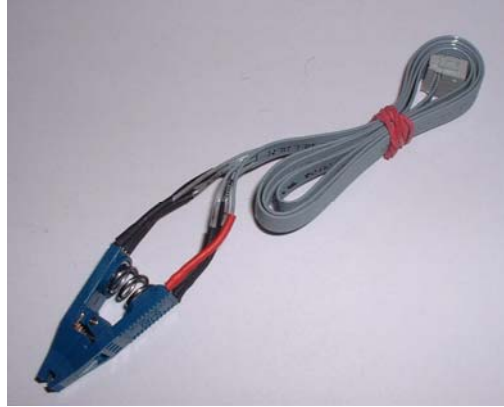
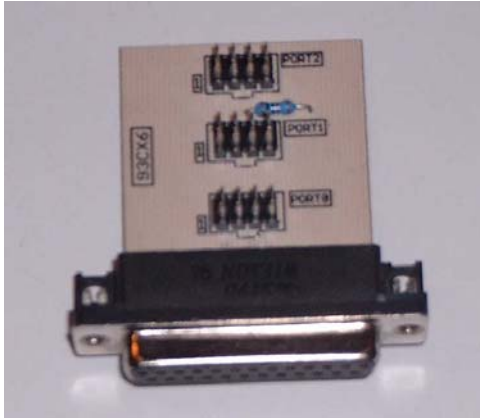
The diagnostic port near your left knee when you sit on the driver's seat.

- Turn ignition on.
- Connect the Tacho Universal with the OBD II plug and the diagnostic port.
- Select the menu **Porsche-Boxter-Diagnosis**
- The Tacho Universal does not show you the old value.
- Enter the new value.
- Verify the new value with **OK**.

---

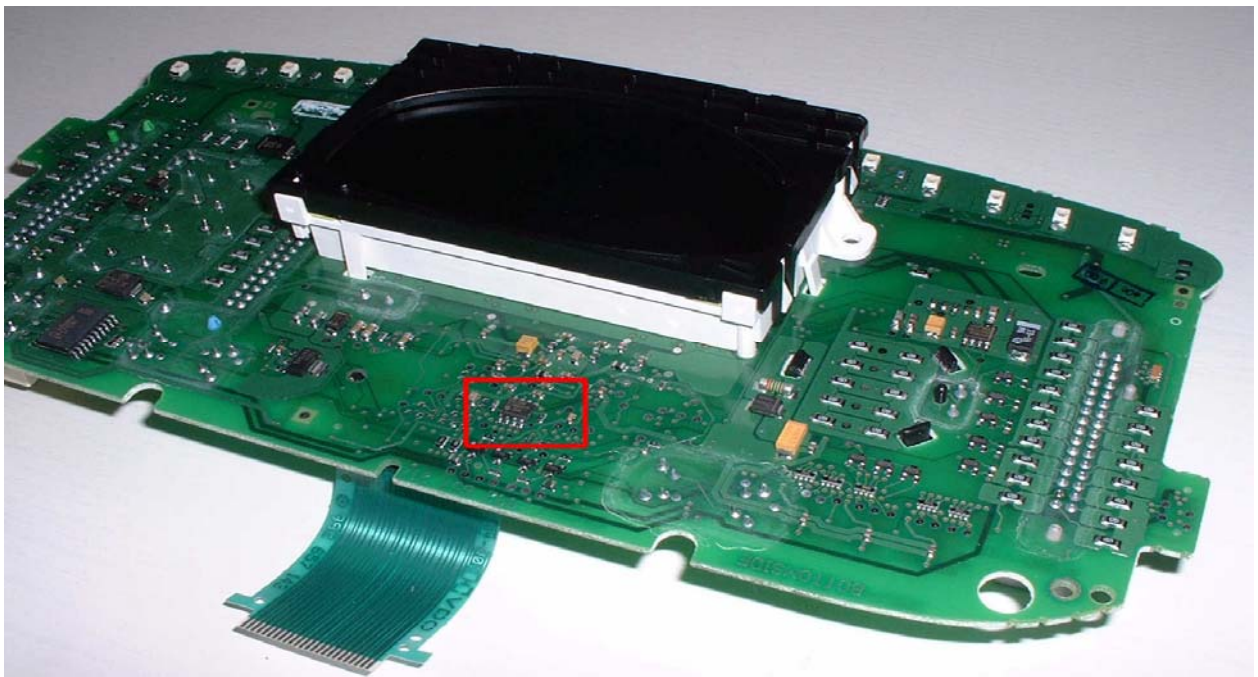
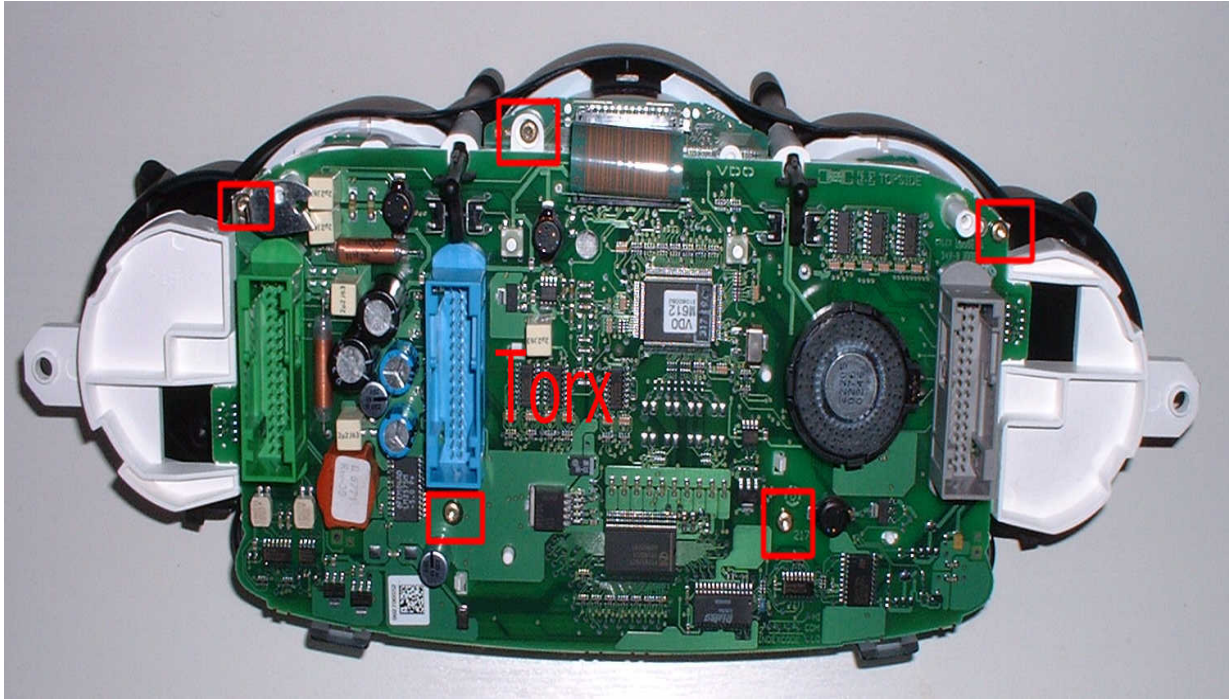
## Model Boxter after model 2000

Use this board and clip:



- Remove the cluster and open it.
- Look for the 8 pin chip 93C86.
- Look for the silver chrystal and join its contacts.
- Connect the clip to port 0.
- Put the clip on the chip 93C86 (red on pin 1).
- Select the menu **Porsche-Porsche 2000**
- The Tacho Universal shows you the old value.
- Select the menu **Adjust KM.**
- Enter the new value.
- Verify the new value with **OK.**





---

## **Model 996 before model 2000**

Diagnostic programming

Use the OBD II - Plug:



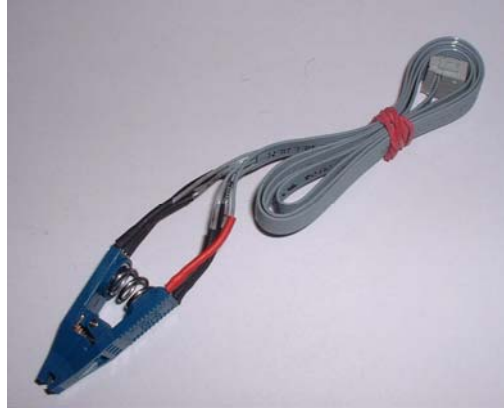
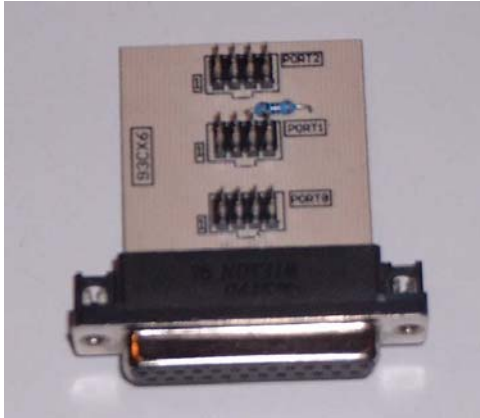
The diagnostic port near your left knee when you sit on the driver's seat.

- Turn ignition on.
- Connect the Tacho Universal with the OBD II plug and the diagnostic port.
- Select the menu **Porsche-996-Diagnose**
- The Tacho Universal does not show you the old value.
- Enter the new value.
- Verify the new value with **OK**.



## Model 996 after model 2000

Use this board and clip:



- Remove the cluster and open it.
- Look for the 8 pin chip 93C86.
- Look for the silver chrystal and join its contacts.
- Connect the clip to port 0.
- Put the clip on the chip 93C86 (red on pin 1).
- Select the menu **Porsche-Porsche 2000**
- The Tacho Universal shows you the old value.
- Select the menu **Adjust KM.**
- Enter the new value.
- Verify the new value with **OK.**



