

---

# **Citroen**

Select the model:

Model Xsara

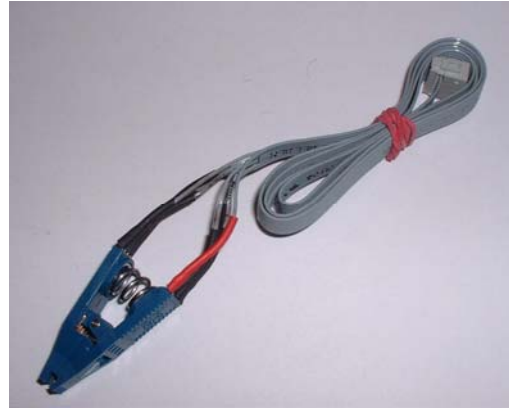
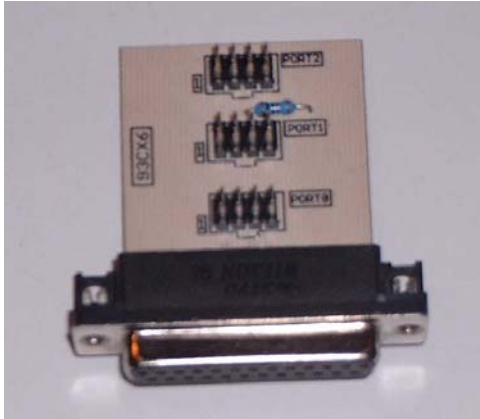
Model Xantia

Model Evasion

---

## Model Xsara

Use this board and clip:

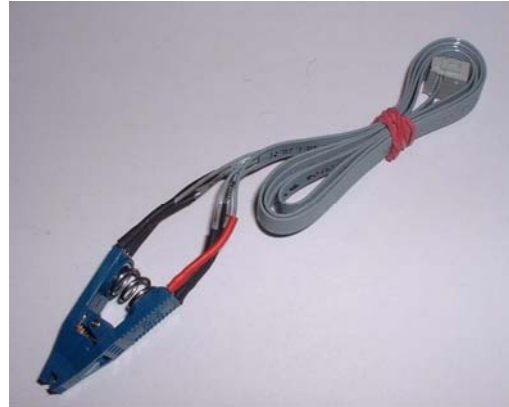
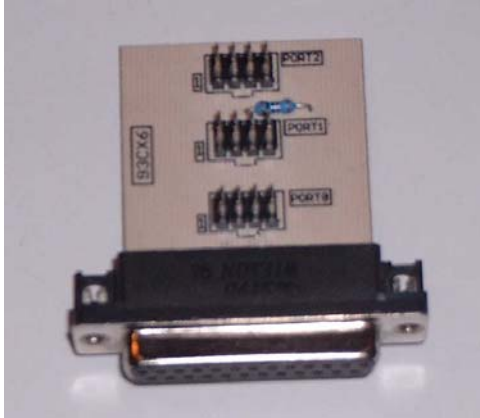


- Remove the cluster and open it.
- Remove the motors carefully from the circuit board. Do not pull off the needles!!!
- Look for the 8 pin chip 93C46.
- Look for the silver chrystal and join its contacts.
- Connect the clip to Port 1.
- Put the clip on the chip 93C46 (red on pin 1).
- Select the menu: **Citroen-Xsara**
- The Tacho Universal shows you the old value.
- Select the menu **Adjust KM.**
- Enter the new value.
- Verify the new value with **OK.**

---

## Model Xantia

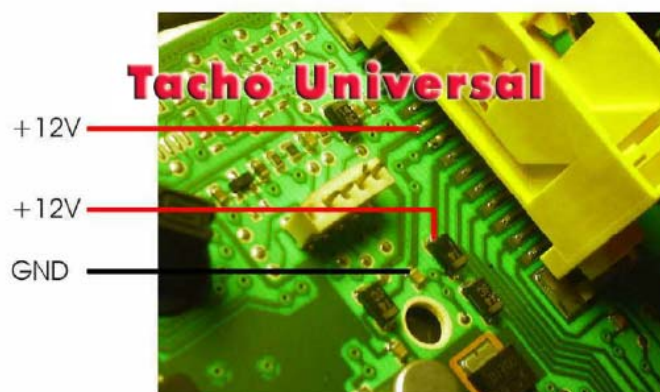
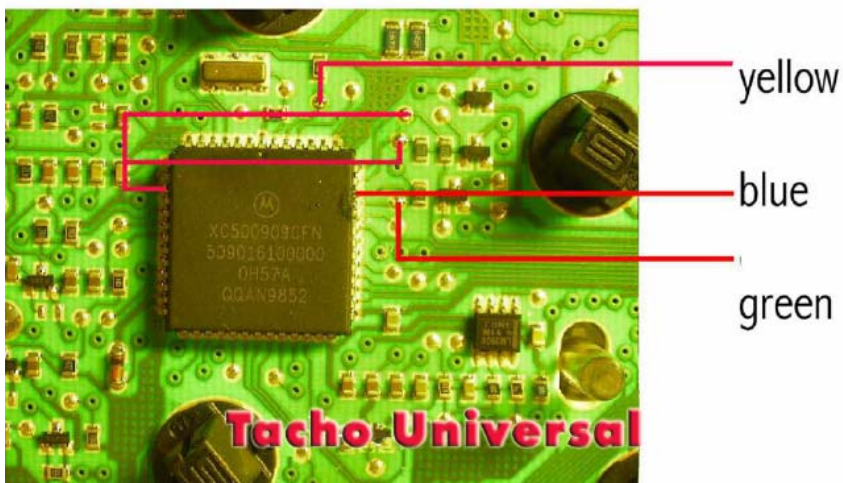
Use this board and clip:



- Remove the cluster and open it.
- Remove the motors carefully from the circuit board. Do not pull off the needles!!!
- Look for the 8 pin chip 93C46.
- Look for the silver chrystal and join its contacts.
- Connect the clip to Port 1.
- Put the clip on the chip 93C46 (red on pin 1).
- Select the menu: **Citroen-Xantia**
- The Tacho Universal shows you the old value.
- Select the menu **Adjust KM.**
- Enter the new value.
- Verify the new value with **OK.**

## Model Evasion

Use the Megane Jaeger/Peugeot 206 plug:



Stecker Megane / P206

- 
- Remove the cluster and open it.
  - Look for the processor.
  - Connect the cables as shown in the picture.
  - Select the menu **Fiat-Ulysse**
  - The Tacho Universal shows you the old value.
  - Enter the new value.
  - Verify the new value with **OK**.