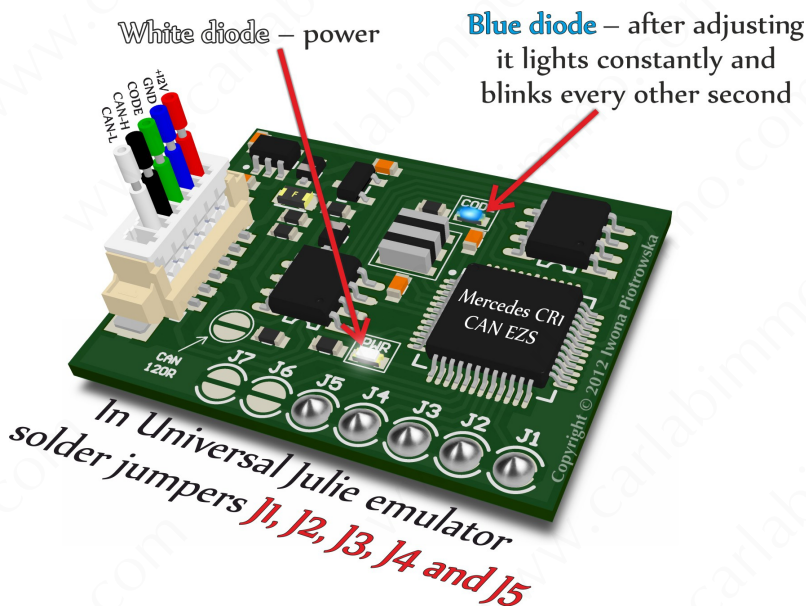




## MERCEDES CR1 with CAN EZS IMMO EMULATOR



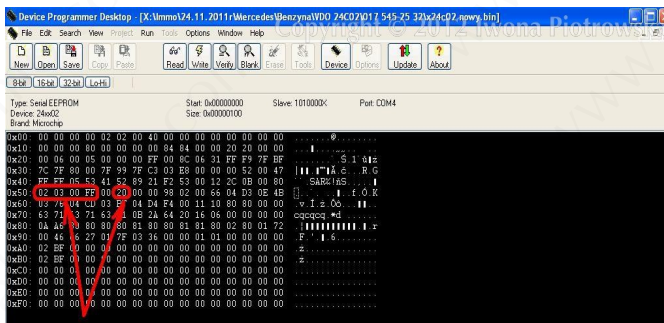
**SOLD AS UNIVERSAL JULIE EMULATOR**

## Mercedes 2-socket (white) VDO ECU with memory 24C02



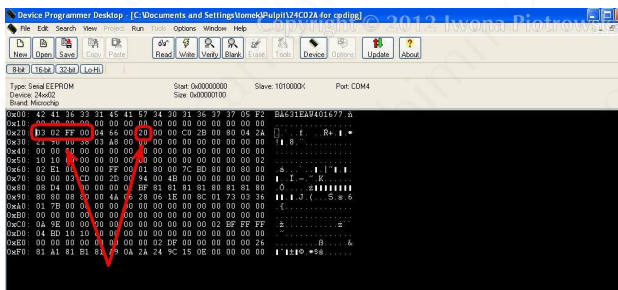
Find 24C02 eeprom in ECU.





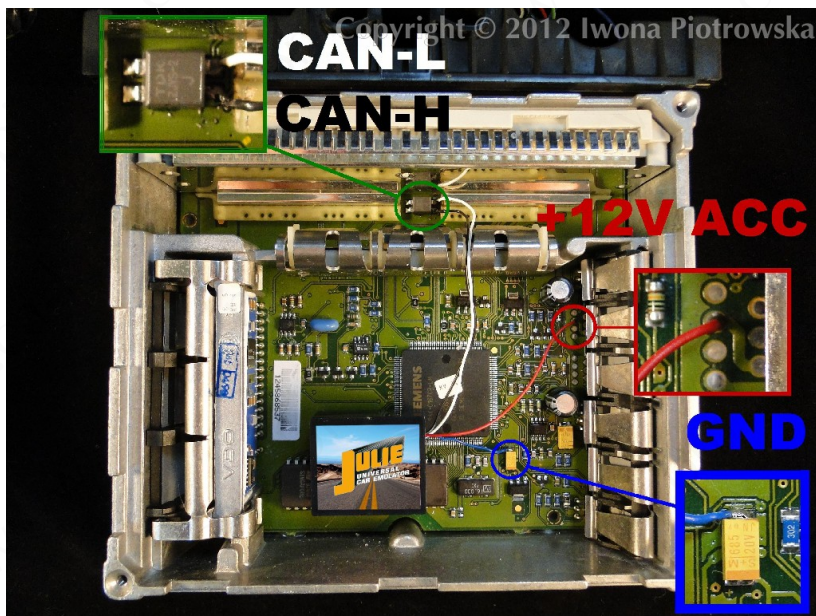
## FOR CODING

In the addresses from 050 to 053 write 02 03 00 FF values,  
and in address 055 write 20 value in 24C02 eeprom



## FOR CODING

or in addresses from 020 to 023 write 02 03 00 FF values,  
and in address 027 write 20 value in 24C02 eeprom



### Connecting emulator to ECU

<b>GND</b>	<b>33pin</b>
<b>Power</b>	<b>39pin</b>
<b>Can H</b>	<b>from choke</b>
<b>Can L</b>	<b>from choke</b>

After connecting the emulator, you need to carry out personalization with HHT or Star Diagnosis diagnostic tools. After starting the engine, you must run the car for 60 seconds for coding to be completed.

### **Warning!!!**

Due to possible construction changes of cars, check signals with multimeter in the ECU plug before connecting the device.

**We state that we are the only authentic authors of this manual. We possess copyright of this publication. All rights reserved. Unauthorized copying, hiring, lending, public performance will be punished!!! Any trials of unauthorized copying, hiring, quoting prohibited!!! Both service and advertisement constitute copyright and they are the subject to the protection in accordance with the Act from 4<sup>th</sup> Feb. 1994 on Copyright and Related Laws (Statute Book no. 24 position 93) and protection on the basis of the Act from 8<sup>th</sup> June 1993 on combating an unfair competition (Statute Book no. 47 position 211).**

**[www.carlabimmo.com](http://www.carlabimmo.com)**

**Last updated 05.09.2014**