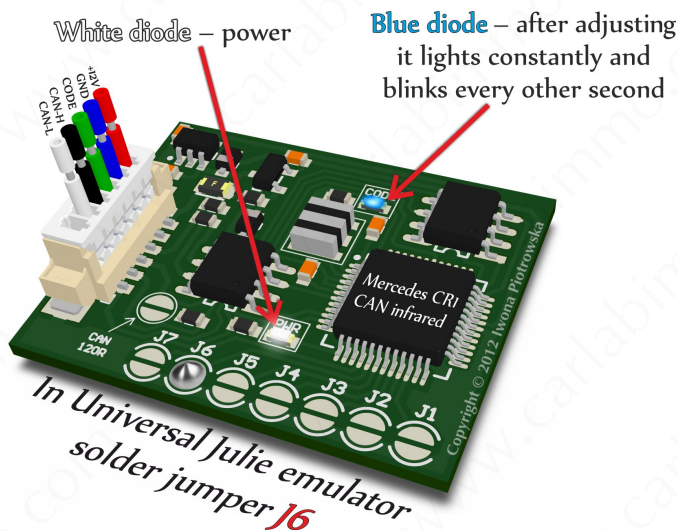




MERCEDES CR1 with CAN infrared IMMO EMULATOR

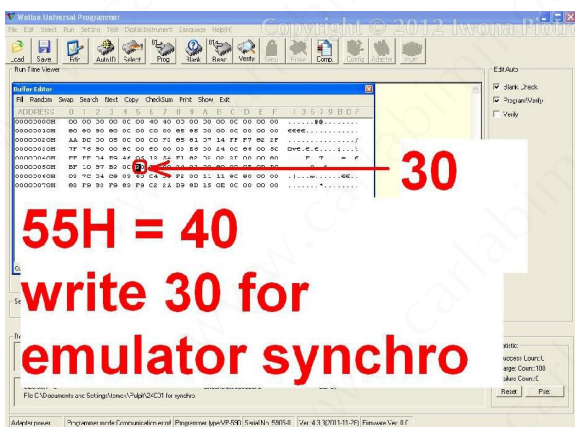
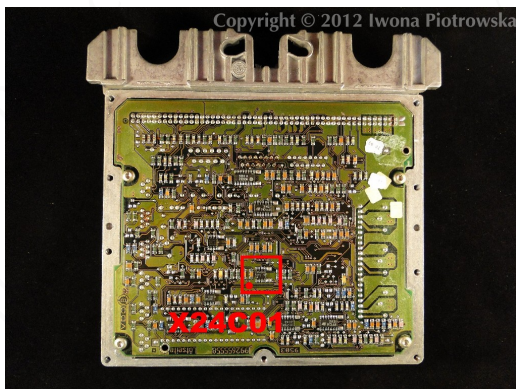


SOLD AS UNIVERSAL JULIE EMULATOR

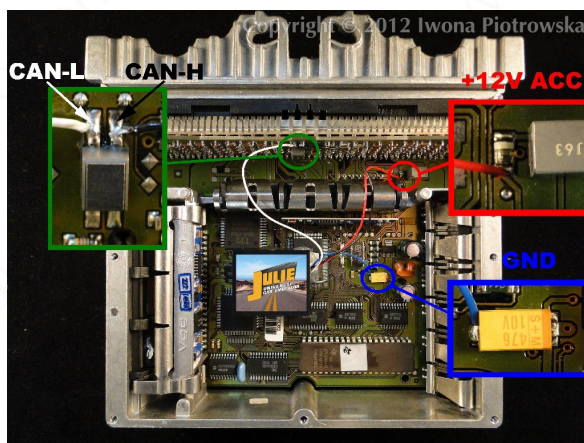
Mercedes 2-socket (black) VDO ECU with X24C01 memory



Find X24C01 eeprom



In address 055 write 30 value



Connecting emulator to ECU

GND - 33pin

Power - 39pin

Can H - from choke

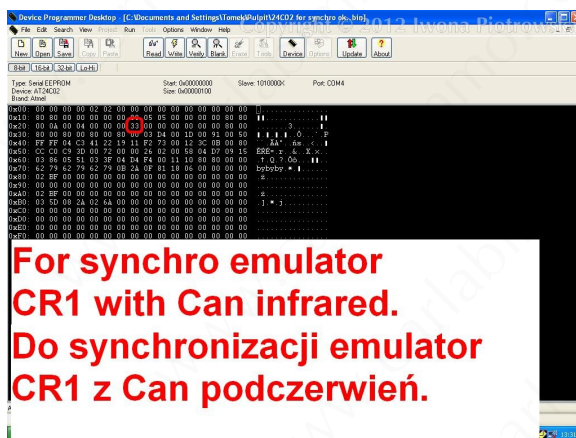
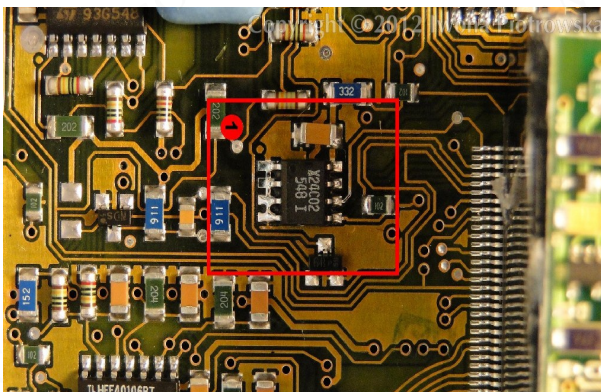
Can L - from choke

After connecting the emulator, you need to carry out personalization with HHT or Star Diagnosis diagnostic tools. After starting the engine, you must run the car for 60 seconds for coding to be completed.

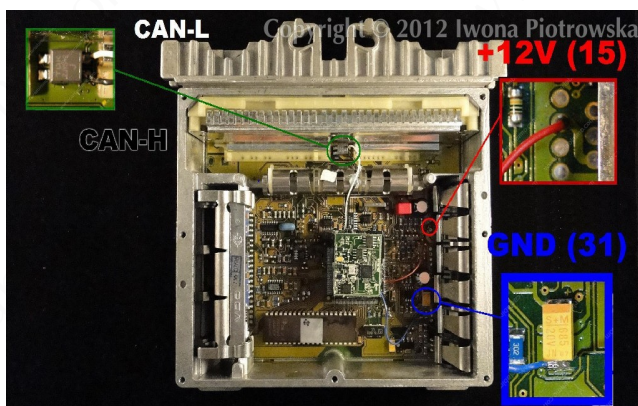
Mercedes 2-socket (yellow) VDO ECU with X24C02 memory



In the ECU find X24C02 eeprom



In address 027 write 33 value in X24C02 eeprom



Connecting emulator to ECU

GND - 33pin

Power - 39pin

Can H - from choke

Can L - from choke

After connecting the emulator, you need to carry out personalization with HHT or Star Diagnosis diagnostic tools. After starting the engine, you must run the car for 60 seconds for coding to be completed.

Warning!!!

Due to possible construction changes of cars, check signals with
multimeter in the ECU plug

We state that we are the only authentic authors of this manual. We possess copyright of this publication. All rights reserved. Unauthorized copying, hiring, lending, public performance will be punished!!! Any trials of unauthorized copying, hiring, quoting prohibited!!! Both service and advertisement constitute copyright and they are the subject to the protection in accordance with the Act from 4th Feb. 1994 on Copyright and Related Laws (Statute Book no. 24 position 93) and protection on the basis of the Act from 8th June 1993 on combating an unfair competition (Statute Book no. 47 position 211).

www.carlabimmo.com

Last updated 05.09.2014