

---

# **Fiat**

Select the model:

Model Bravo / Brava version with ST-board

Model Bravo / Brava version custom

Model Bravo / Brava version 908

Model Bravo / Brava UK NSI

Fiat Model Marea version MM3S

Model Marea version QAF, OPT and 68H

Model Tipo Borg / Veglia

Model Tempra Borg / Veglia

Model Punto 2000

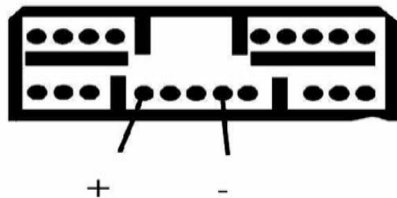
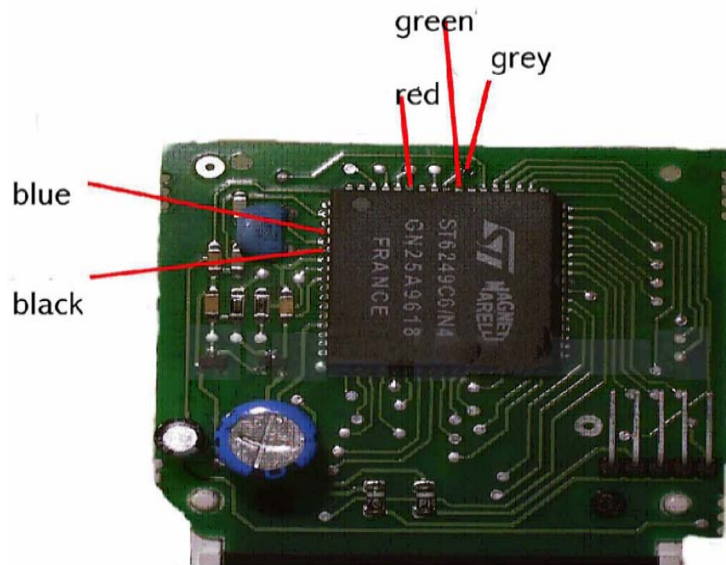
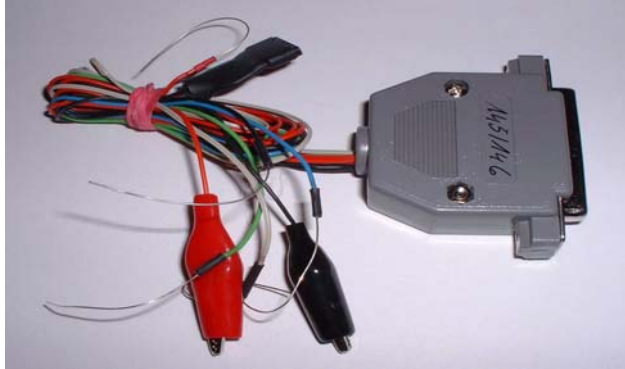
Model Ulysse

Model Multipla

---

## Model Bravo / Brava version with ST-board

Use the Alfa 145/146 / Renault Twingo-plug:



power supply

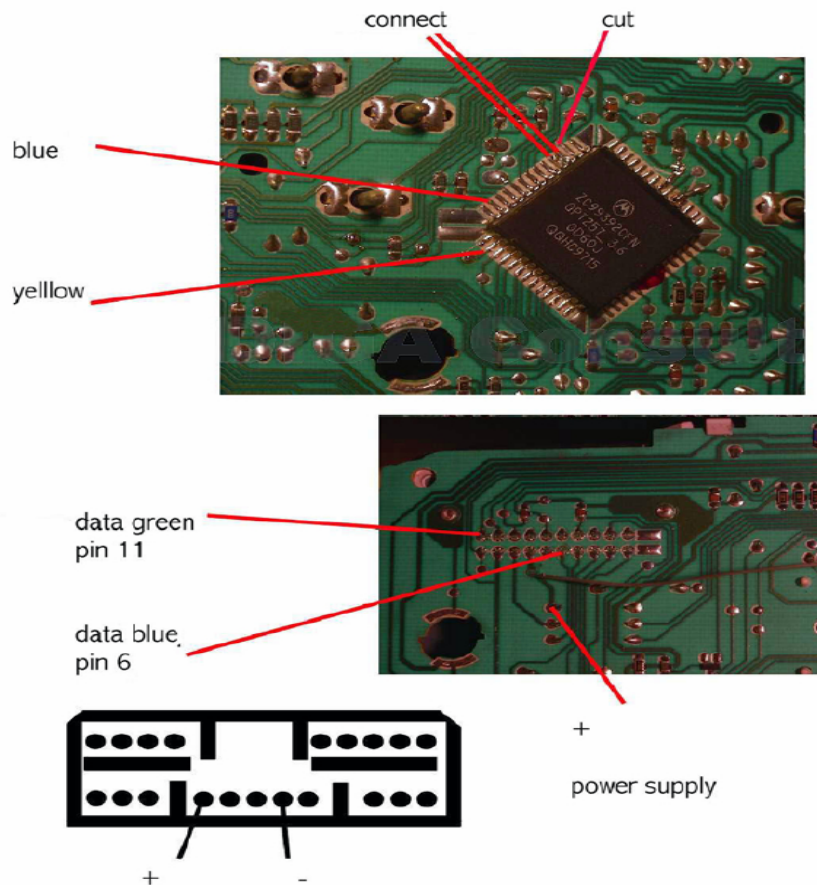
- Remove the cluster and open it.
- Look for the Magneti Marelli processor. It is on a small circuit board that has not to be removed.
- Cut the pin for the red cable.
- Connect the cables as shown in the picture.
- Connect the plug to the Tacho Universal.
- Select the menu: **Fiat-Bravo/Brava-ST-Modul**
- The Tacho Universal shows you the old value.
- Enter the new value.
- Verify the new value with **OK**.

---

## Model Bravo / Brava version custom

Only for Zc9939... and Zc501... processors

Use the Peugeot 406-plug:

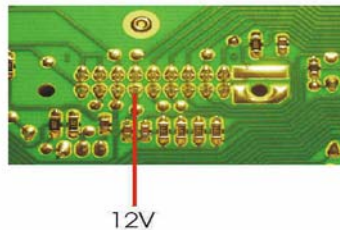
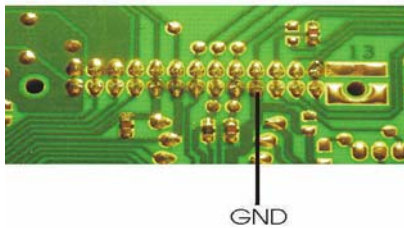
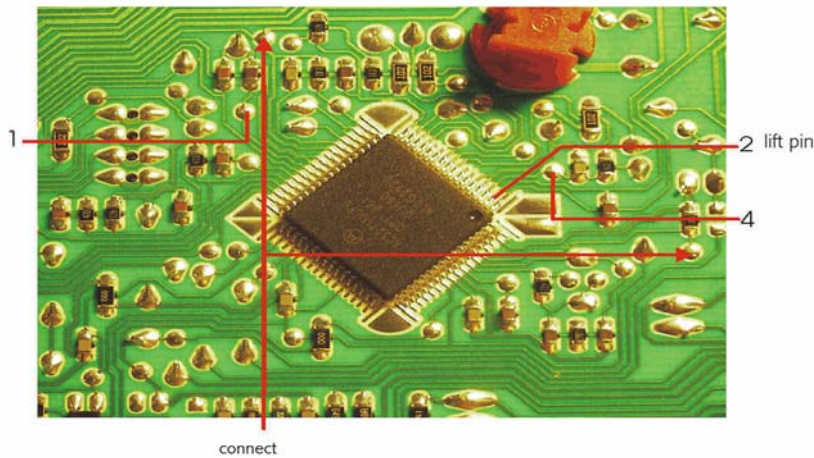


- Remove the cluster and open it.
- Look for the processor.
- Cut the track and connect the 2 pins as shown.
- Connect the cables as shown in the picture (the data-cables are connected as a pair, so you can recognize them).
- Connect the plug to the Tacho Universal.
- Select the menu: **Fiat-Bravo/Brava-Custom**
- The Tacho Universal does not show you the old value.
- Enter the new value.
- Verify the new value with **OK**.

---

## Model Bravo / Brava version 908

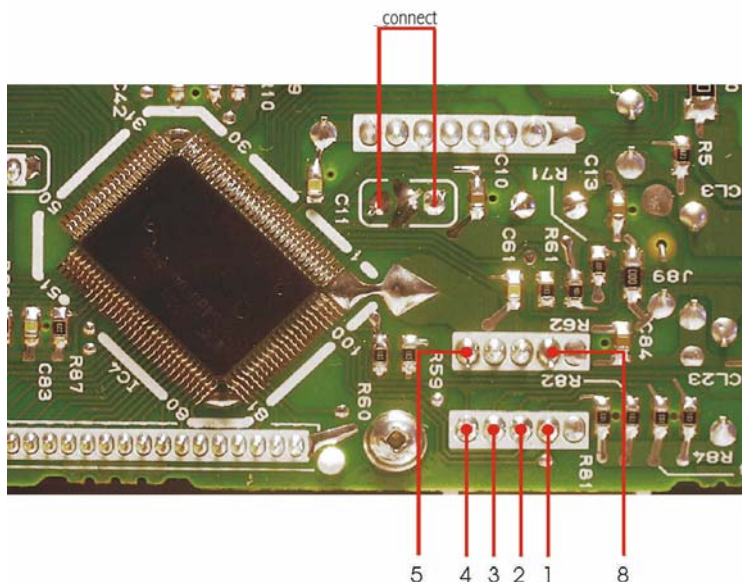
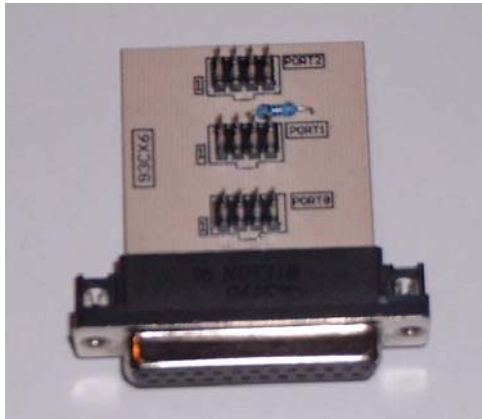
Use the 908-plug:



- Remove the cluster and open it.
- Connect the cables as shown in the picture.
- Connect the plug to the Tacho Universal.
- Select the menu: **Fiat-Bravo/Brava-908 V1 or V2**
- The Tacho Universal displays you the old value. Only program with the version that gives you the correct value.
- Enter the new value. Verify the new value with **OK**.

## Model Bravo / Brava UK NSI

Use this board and clip:



- Remove the cluster and open it.
- Connect the cables as shown in the picture.
- Connect the clip to Port 1.
- Select the menu: **Fiat-Bravo UKNSI**
- The Tacho Universal shows you the old value.
- Select the menu **Adjust KM**.
- Enter the new value.
- Verify the new value with **OK**.

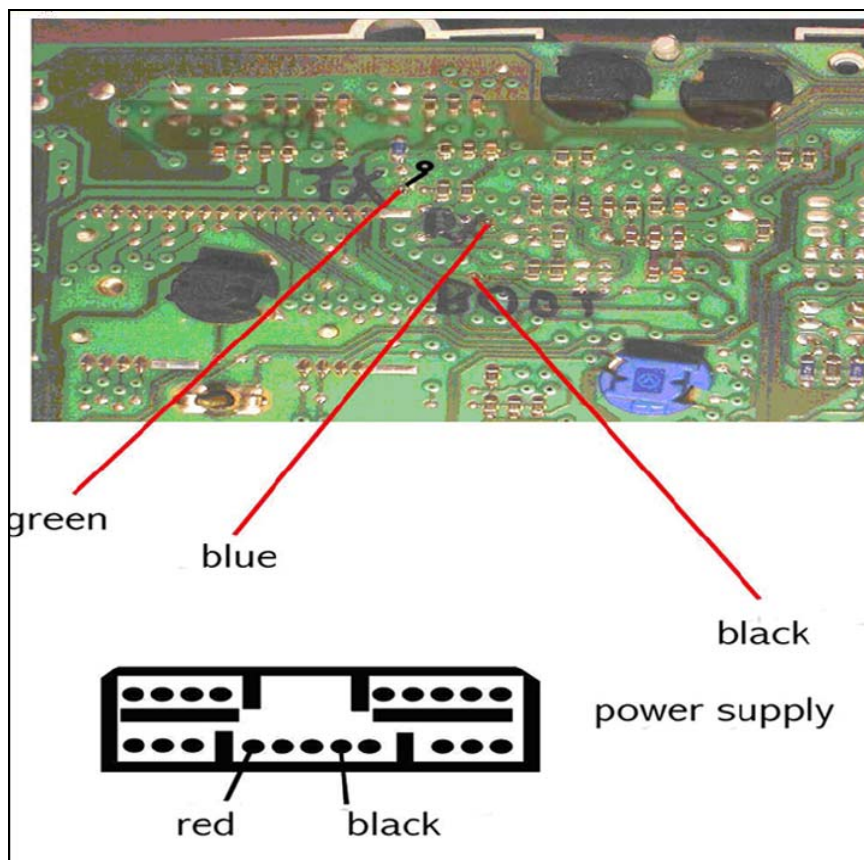
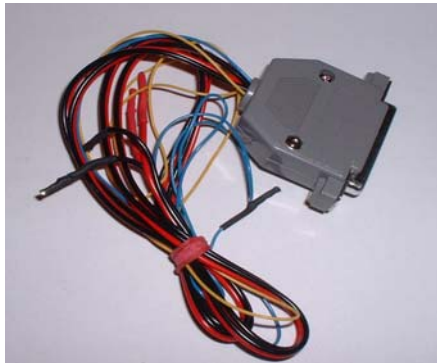
**Note:**

If the Tacho Universal displays you the double of the original value, you have to program the double of the desired value!

---

## Model Marea version MM3S

Use the Scorpio-Plug:

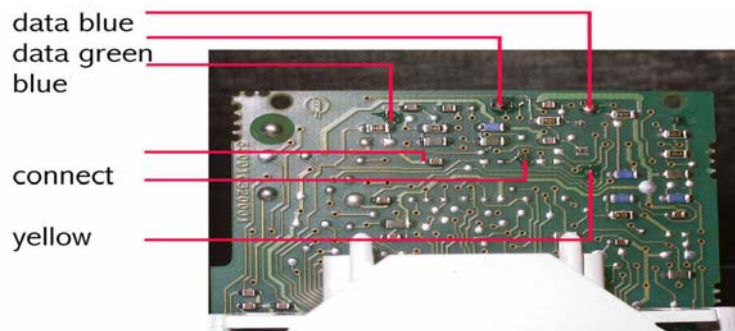


- Remove the cluster and open it.
- Cut the black marked track.
- Connect the cables as shown in the picture.
- Select the menu: - **MM3S**
- The Tacho Universal shows you the old value.
- Enter the new value.
- Verify the new value with **OK**.
- Repair the track that you have cut before.

---

## Model Marea version QAF, OPT and 68H

Use the Peugeot 406 plug:



power supply

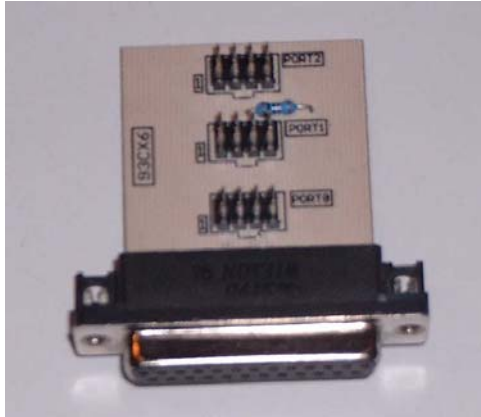
red black

- Remove the cluster and open it.
- Look for the processor.
- Connect the cables as shown in the picture (the data-cables are connected as a pair, so you can recognize them).
- Connect the plug to the Tacho Universal.
- Select the menu: **Fiat-Marea- QAF/OPT oder 68H**
- The Tacho Universal does not show you the old value.
- Enter the new value.
- Verify the new value with **OK**.

---

## Model Tipo Borg / Veglia

Use this board and clip:

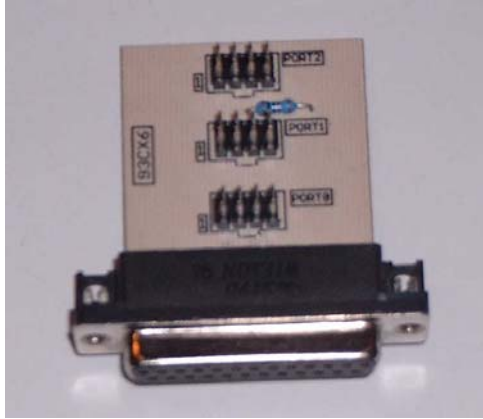


- Remove the cluster and open it.
- Look for the 8 pin chip 93C06.
- Look for the silver chrystal and join its contacts.
- Connect the clip to Port 1.
- Put the clip on the chip 93C06 (red on pin 1).
- Select the menu: **Fiat-Tipo Borg oder Tipo Veglia**
- The Tacho Universal shows you the old value.
- Select the menu **Adjust KM.**
- Enter the new value.
- Verify the new value with **OK.**

---

## Model Tempra Borg / Veglia

Use this board and clip:

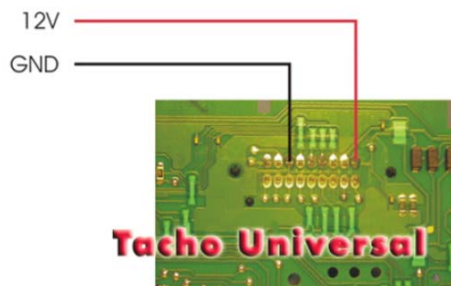


- Remove the cluster and open it.
- Look for the 8 pin chip 93C06.
- Look for the silver chrystal and join its contacts.
- Connect the clip to Port 1.
- Put the clip on the chip 93C06 (red on pin 1).
- Select the menu: **Fiat-Tempra Borg oder Tipo Veglia**
- The Tacho Universal shows you the old value.
- Select the menu **Adjust KM.**
- Enter the new value.
- Verify the new value with **OK.**

---

## Model Punto 2000

Use the 908 plug:



- Remove the cluster and open it.
- Look, what processor it is to be able to select the correct program.
- Connect the cables as shown in the picture.
- Select the menu: **Fiat-Punto 2000- 68HC or XC44 or XC52**
- The Tacho Universal shows you the old value.
- Enter the new value.
- Verify the new value with **OK**.

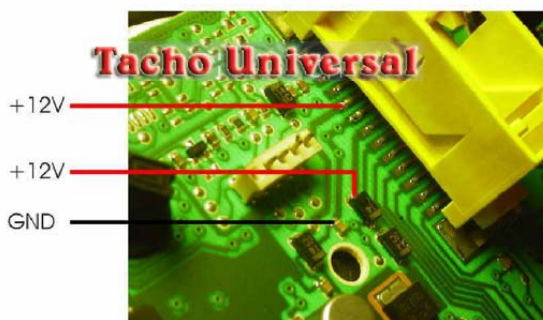
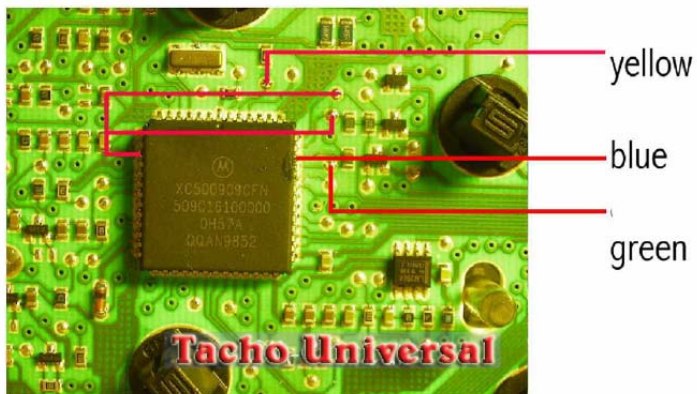
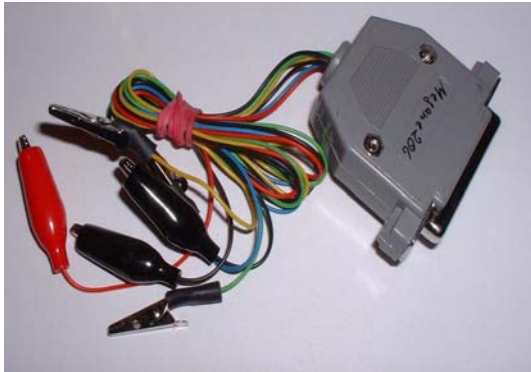
### Note:

There are several shapes of the circuit board. Important for programming are only the 3 points on the left side of the board!

---

## Model Ulysse

Use the Megane / Peugeot 206 plug:

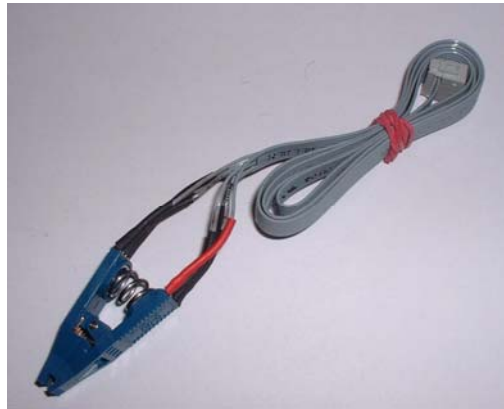
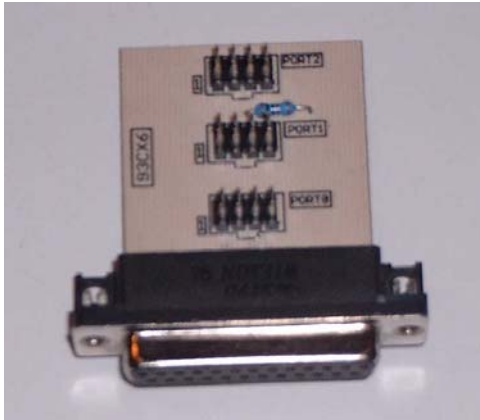


- Remove the cluster and open it.
- Connect the cables as shown in the picture.
- Select the menu: **Fiat-Ulysse**
- The Tacho Universal shows you the old value.
- Enter the new value.
- Verify the new value with **OK**.

---

## Model Multipla

Use this board and clip:



- Remove the cluster and open it.
- Look for the 8 pin chip 93C56.
- Look for the silver chrystal and join its contacts.
- Connect the clip to Port 1.
- Put the clip on the chip 93C56 (red on pin 1).
- Select the menu: **Fiat- Multipla**
- The Tacho Universal shows you the old value.
- Select the menu **Adjust KM.**
- Enter the new value.
- Verify the new value with **OK.**