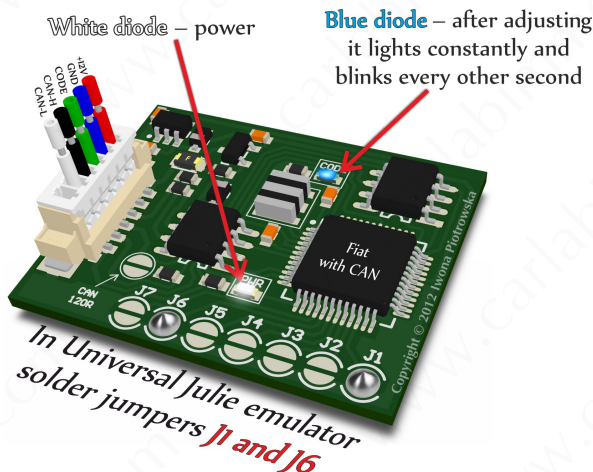




## Fiat with CAN 5SF and 6F3 ECU

### IMMO EMULATOR



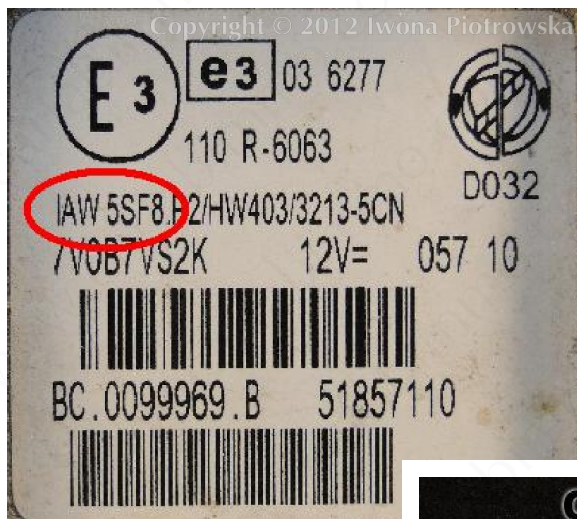
**SOLD AS UNIVERSAL JULIE EMULATOR**

## Fiat with CAN 5SF and 6F3 ECU

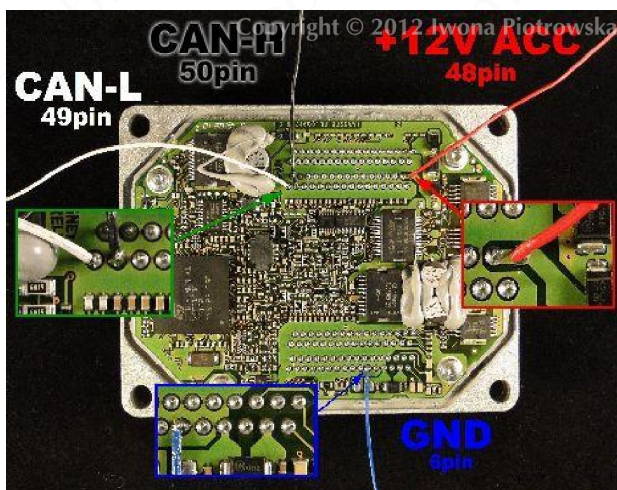
Copyright © 2012 Iwona Piotrowska



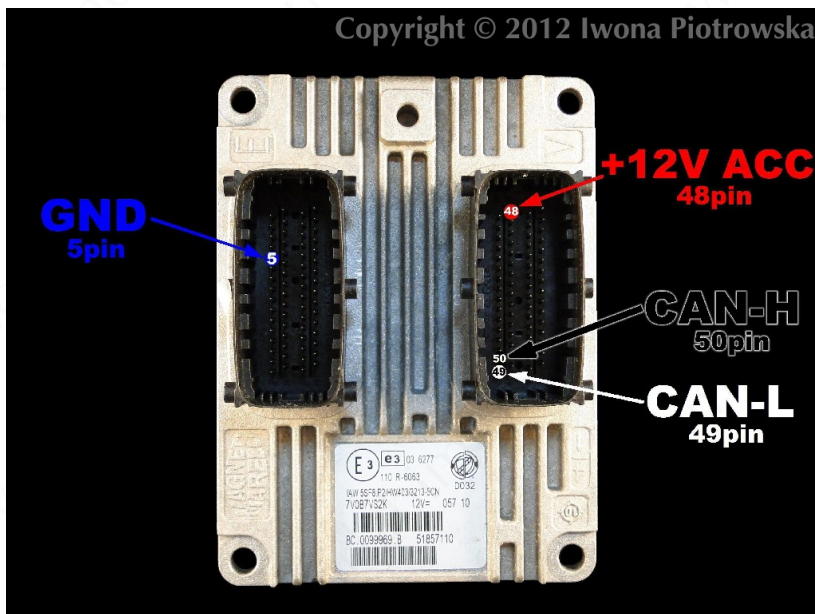
## Connecting emulator to 5SF ECU



<b>GND</b>	<b>6 pin</b>
<b>+12V ACC</b>	<b>48 pin</b>
<b>Can H</b>	<b>50 pin</b>
<b>Can L</b>	<b>49 pin</b>



## Connecting to ECU socket



**GND**

**6 pin**

**+12V ACC**

**48 pin**

**Can H**

**50 pin**

**Can L**

**49 pin**

### **Warning!!!**

Due to possible construction changes of cars, check signals with multimeter in the ECU plug before connecting the device.

**We state that we are the only authentic authors of this manual. We possess copyright of this publication. All rights reserved. Unauthorized copying, hiring, lending, public performance will be punished!!! Any trials of unauthorized copying, hiring, quoting prohibited!!! Both service and advertisement constitute copyright and they are the subject to the protection in accordance with the Act from 4<sup>th</sup> Feb. 1994 on Copyright and Related Laws (Statute Book no. 24 position 93) and protection on the basis of the Act from 8<sup>th</sup> June 1993 on combating an unfair competition (Statute Book no. 47 position 211)**

**[www.carlabimmo.com](http://www.carlabimmo.com)**

**Last updated 05.09.2014**