
Audi

Select the model:

Model A2 VDO

Model A3 / S3 VDO before model 2000

Model A3 / S3 UKNSI

Model A3 / S3 VDO model 2000 cluster plug

Model A3 / S3 VDO model 2000 clip

Model A3 / S3 Magneti Marelli model 2000

Model A4 / S4 VDO before model 2000

Model A4 / S4 UK NSI

Model A4 / S4 VDO model 2000 cluster plug

Model A4 / S4 VDO model 2000 clip

Model A4 / S4 Magneti Marelli model 2000

Model A4 Bosch model 2001 clip

Model A6 / S6, old model C4, before 1997

Model A6 / S6 VDO, new model before model 2000

Model A6 / S6 UK NSI

Model A6 / S6 VDO model 2000 cluster plug

Model A6 / S6 VDO model 2000 clip

Model A6 / S6 Magneti Marelli model 2000

Model A8 / S8 before 1/1999

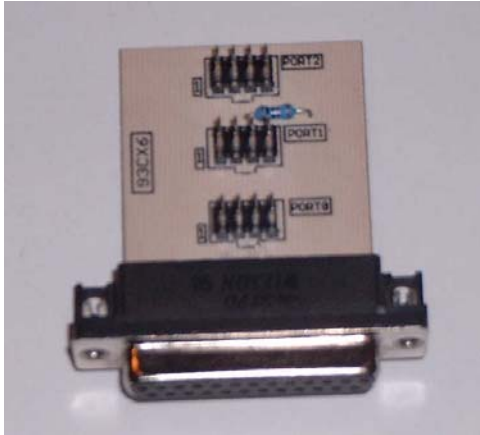
Model A8 / S8 after 1/1999

Model TT before model 2000

Model TT model 2000

Model A2 VDO

Use this board and clip:



- Remove the cluster and open it.
- Look for the 8 pin chip 93C86.
- Look for the silver chrystal and join its contacts.
- Connect the clip to Port 0.
- Put the clip on the chip 93C86 (red on pin 1).
- Select the menu **Audi-A3-A3 2000- clip 2000.**
- The Tacho Universal shows you the old value.
- Select the menu **Adjust KM.**
- Enter the new value.
- Verify the new value with **OK.**

Model A3 / S3 VDO before model 2000

Diagnostic programming

Use the OBD II -plug:

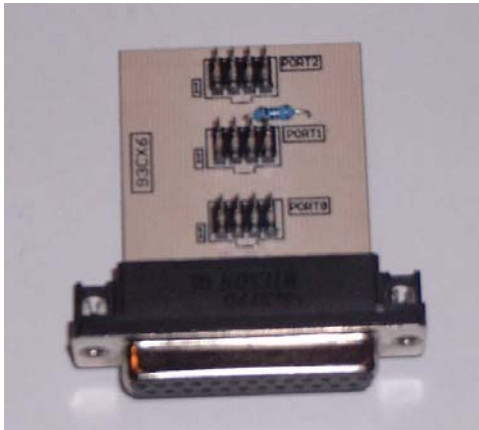


The diagnostic port is in the middle console of the car.

- Turn ignition on.
- Connect the Tacho Universal to the OBD II plug and the diagnostic port..
- Select the menu **AUDI-A3-VDO-Diagnosis.**
- The Tacho Universal shows you the old value.
- Enter the new value.
- Verify the new value with **OK.**

Model A3 / S3 UKNSI

Use this board and clip:



- Remove the cluster and open it.
- Look for the 8 pin chip 93C56 (**not the chip 93C46**).
- Look for the silver crystal and join its contacts.
- Connect the clip to Port 1.
- Put the clip on the chip 93C56 (red on pin 1).
- Select the menu **Audi-A3-UK NSI-Clip**.
- The Tacho Universal shows you the old value.
- Select the menu **Adjust KM**.
- Enter the new value.
- Verify the new value with **OK**.

Model A3 / S3 VDO model 2000 cluster plug

To recognize model 2000, take a look at the clock. If it is electronic, it is model 2000, if it is mechanic it is an older model.

Use this plug:



- Remove the cluster.
- Connect the blue and the green plug to the instrument.
- Select the menu **Audi-A3-A3 2000-Diagnosis 2000**.
- The Tacho Universal shows you the old value.
- Enter the new value.
- Verify the new value with **OK**.

Note:

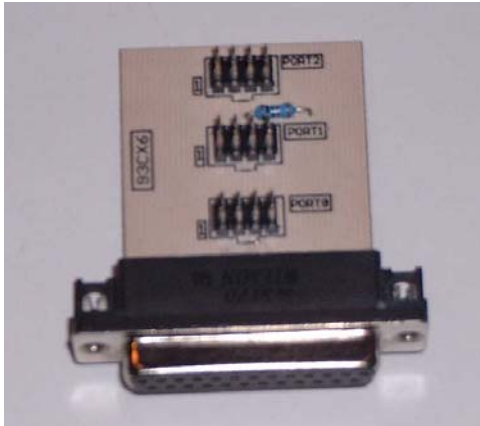
If the displayed value is not correct, you can continue programming, most time it works anyway.

You cannot destroy anything. If you cannot change the value this way, you have to program by clip.

Model A3 / S3 VDO model 2000 clip

To recognize model 2000, take a look at the clock. If it is electronic, it is model 2000, if it is mechanic it is an older model.

Use this board and clip:



- Remove the cluster and open it.
- Look for the 8 pin chip 93C86.
- Look for the silver chrystal and join its contacts.
- Connect the clip to Port 0.
- Put the clip on the chip 93C86 (red on pin 1).
- Select the menu **Audi-A3-A3 2000- clip 2000.**
- The Tacho Universal shows you the old value.
- Select the menu **Adjust KM.**
- Enter the new value.
- Verify the new value with **OK.**

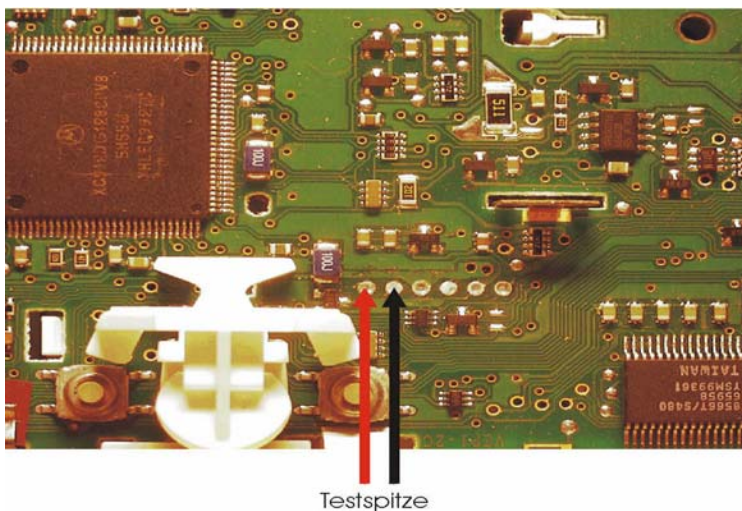
Model A3 / S3 Magneti Marelli model 2000

To recognize model 2000, take a look at the clock. If it is electronic, it is model 2000, if it is mechanic it is an older model.

Use this plug:



- Remove the cluster and open it.
- Connect the blue and the green plug to the instrument.
- Also connect the black and the red cables like shown in the picture.
- **IMPORTANT: You must not move the black and the red contact when beginning to read until you are ready with programming. A good contact is absolutely necessary.**
- Select the menu **Audi-A3-A3 2000-Magneti Marelli**.
- The Tacho Universal shows you the old value.
- Enter the new value.
- Verify the new value with **OK**.



Note:

If the handheld shows you „out of range“ the contact was bad or the database may be corrupted. For security reasons you cannot program the instrument at this moment.

Normally it will be possible to program again after driving about 100 km.

Model A4 / S4 VDO before model 2000

Diagnostic programming

Use the OBD II -plug:



The diagnostic port is in the back of the car in the ashtray.

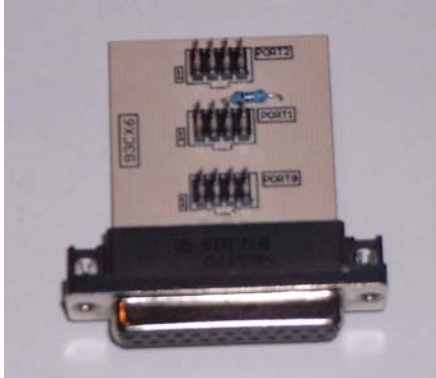
Note:

There are different instrument versions. To find the right one, you have to try which one gives you the right value when reading. Reading will not corrupt the database. But only program with the version that gives you the correct value!

- Turn ignition on.
- Connect the Tacho Universal to the OBD II plug and the diagnostic port..
- Select the menu **Audi-A4-VDO old- Diagnosis**
or **Audi-A4-VDO old MFA-Diagnosis**
or **Audi-A4-VDO new-Diagnosis**
- The Tacho Universal shows you with one of these programs the old value.
- Enter the new value.
- Verify the new value with **OK**

Model A4 / S4 UK NSI

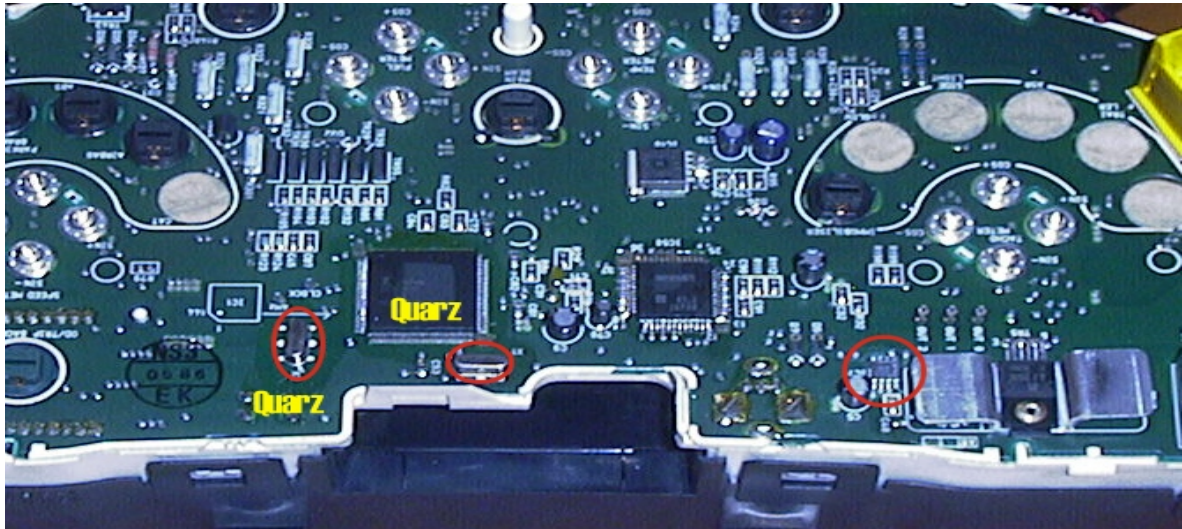
Use this board and clip:



Note:

There are different instrument versions. To find the right one, you have to try which one gives you the right value when reading. Reading will not corrupt the database. But only program with the version that gives you the correct value!

- Remove the cluster and open it.
- Look for the 8 pin chip 93C56 (**not the chip 93C46**).
- Look for the silver chrystal and join its contacts.
- Connect the clip to Port 1.
- Put the clip on the chip 93C56 (red on pin 1).
- Select the menu **Audi-A4-UK NSI-UK NSI old**
or **Audi A4-UK NSI- UK NSI new**
or **Audi A4-UK NSI-UK 2 Eeproms**
- The Tacho Universal shows you the old value.
- Select the menu **Adjust KM**.
- Enter the new value.
- Verify the new value with **OK**.



Model A4 / S4 VDO model 2000 cluster plug

To recognize model 2000, take a look at the clock. If it is electronic, it is model 2000, if it is mechanic it is an older model.

Use this plug:



- Remove the cluster.
- Connect the blue and the green plug to the instrument.
- Select the menu **Audi-A3-A3 2000-Diagnosis 2000**.
- The Tacho Universal shows you the old value.
- Enter the new value.
- Verify the new value with **OK**.

Note:

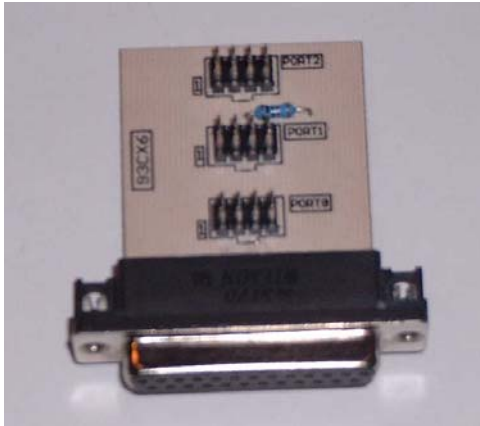
If the displayed value is not correct, you can continue programming, most time it works anyway.

You cannot destroy anything. If you cannot change the value this way, you have to program by clip.

Model A4 / S4 VDO model 2000 clip

To recognize model 2000, take a look at the clock. If it is electronic, it is model 2000, if it is mechanic it is an older model.

Use this board and clip:



- Remove the cluster and open it.
- Look for the 8 pin chip 93C86.
- Look for the silver chrystal and join its contacts.
- Connect the clip to Port 0.
- Put the clip on the chip 93C86 (red on pin 1).
- Select the menu **Audi-A3-A3 2000- clip 2000.**
- The Tacho Universal shows you the old value.
- Select the menu **Adjust KM.**
- Enter the new value.
- Verify the new value with **OK.**

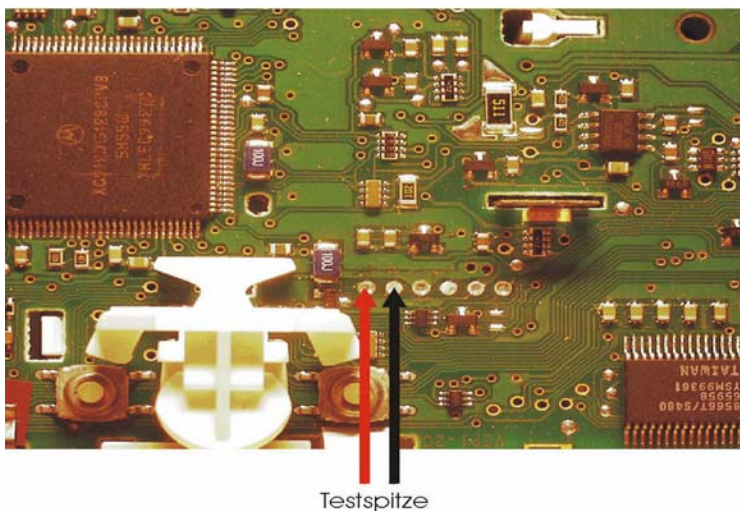
Model A4 / S4 Magneti Marelli model 2000

To recognize model 2000, take a look at the clock. If it is electronic, it is model 2000, if it is mechanic it is an older model.

Use this plug:



- Remove the cluster and open it.
- Connect the blue and the green plug to the instrument.
- Also connect the black and the red cables like shown in the picture.
- IMPORTANT: You must not move the black and the red contact when beginning to read until you are ready with programming. A good contact is absolutely necessary.
- Select the menu **Audi-A3-A3 2000-Magneti Marelli**.
- The Tacho Universal shows you the old value.
- Enter the new value.
- Verify the new value with **OK**.



Note:

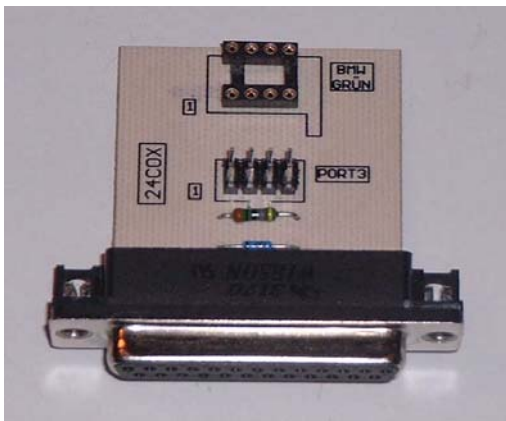
If the handheld shows you „out of range“ the contact was bad or the database may be corrupted. For security reasons you cannot program the instrument at this moment.

Normally it will be possible to program again after driving about 100 km.

Model A4 Bosch model 2001 clip



Use this board and clip:



- Remove the cluster and open it.



- Pull off the needles for speed and rpm



-
- Look for the 8 pin chip 24C08.



- Connect the clip to Port 3.
- Put the clip on the chip 24C08 (red on pin 1).
- Select the menu **Audi-A4-A4 24C08**
- The Tacho Universal shows you the old value.
- Select the menu **Adjust KM.**
- Enter the new value.
- Verify the new value with **OK.**

Model A6 / S6, old model C4, before 1997

Use those two plugs and connect them:



The diagnostic port is in the fuse box in the motorroom.

- Turn ignition on.
- Connect the Tacho Universal with both plugs to the diagnostic port.
- Select the menu **AUDI – A6 – A6 old - Diagnosis**.
- The Tacho Universal shows you the old value.
- Enter the new value.
- Verify the new value with **OK**.

Note:

If you cannot read the old value or nothing changes when programming, let the engine run. Maybe you have to try several times, also try different values, it will work.

Model A6 / S6 VDO, new model before model 2000

Diagnostic programming

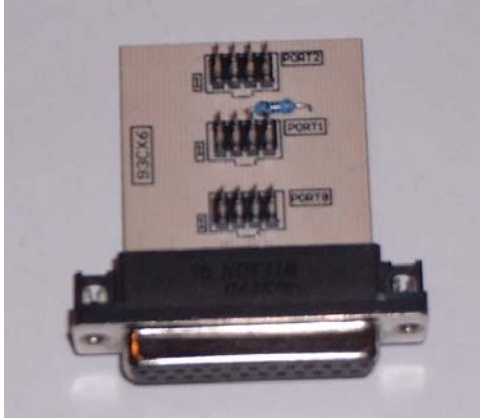
Use the OBD II -plug:



- The diagnostic port near your left knee when you sit on the driver's seat.
- Turn ignition on.
- Connect the Tacho Universal to the OBD II plug and the diagnostic port..
- Select the menu **AUDI-A3-VDO-Diagnosis**.
- The Tacho Universal shows you the old value.
- Enter the new value.
- Verify the new value with **OK**.

Model A6 / S6 UK NSI

Use this board and clip:



- Remove the cluster and open it.
- Look for the 8 pin chip 93C56 (**not the chip 93C46**).
- Look for the silver chrystal and join its contacts.
- Connect the clip to Port 1.
- Put the clip on the chip 93C56 (red on pin 1).
- Verbinden Sie die Clip mit Port 1.
- Select the menu **Audi-A3-UK NSI-Clip**.
- The Tacho Universal shows you the old value.
- Select the menu **Adjust KM**.
- Enter the new value.
- Verify the new value with **OK**.

Model A6 / S6 VDO model 2000 cluster plug

To recognize model 2000, take a look at the clock. If it is electronic, it is model 2000, if it is mechanic it is an older model.

Use this plug:



- Remove the cluster.
- Connect the blue and the green plug to the instrument.
- Select the menu **Audi-A3-A3 2000-Diagnosis 2000**.
- The Tacho Universal shows you the old value.
- Enter the new value.
- Verify the new value with **OK**.

Note:

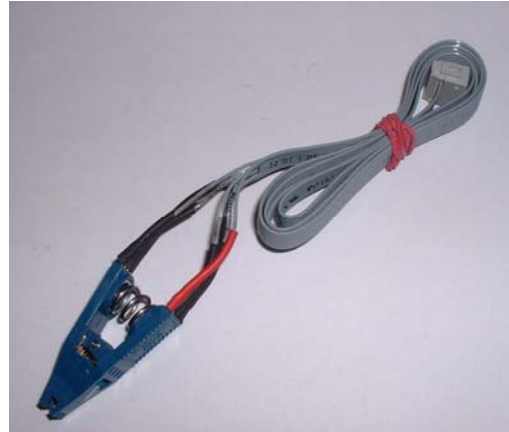
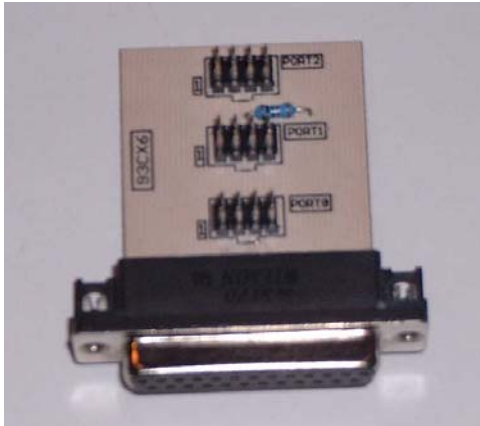
If the displayed value is not correct, you can continue programming, most time it works anyway.

You cannot destroy anything. If you cannot change the value this way, you have to program by clip.

Model A6 / S6 VDO model 2000 clip

To recognize model 2000, take a look at the clock. If it is electronic, it is model 2000, if it is mechanic it is an older model.

Use this board and clip:



- Remove the cluster and open it.
- Look for the 8 pin chip 93C86.
- Look for the silver chrystal and join its contacts.
- Connect the clip to Port 0.
- Put the clip on the chip 93C86 (red on pin 1).
- Select the menu **Audi-A3-A3 2000- clip 2000**.
- The Tacho Universal shows you the old value.
- Select the menu **Adjust KM**.
- Enter the new value.
- Verify the new value with **OK**.

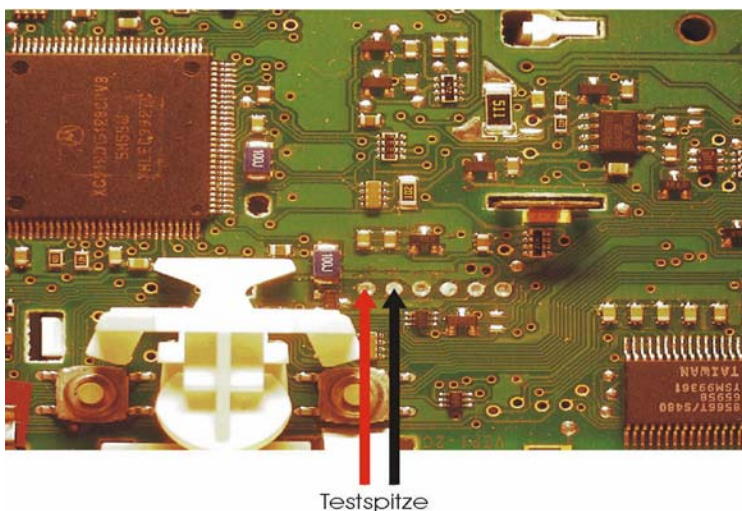
Model A6 / S6 Magneti Marelli model 2000

To recognize model 2000, take a look at the clock. If it is electronic, it is model 2000, if it is mechanic it is an older model.

Use this plug:



- Remove the cluster and open it.
- Connect the blue and the green plug to the instrument.
- Also connect the black and the red cables like shown in the picture.
- IMPORTANT: You must not move the black and the red contact when beginning to read until you are ready with programming. A good contact is absolutely necessary.
- Select the menu **Audi-A3-A3 2000-Magneti Marelli**.
- The Tacho Universal shows you the old value.
- Enter the new value.
- Verify the new value with **OK**.



Note:

If the handheld shows you „out of range“ the contact was bad or the database may be corrupted. For security reasons you cannot program the instrument at this moment.

Normally it will be possible to program again after driving about 100 km.

Model A8 / S8 before 1/1999

Diagnostic programming

Use the OBD II -plug:



- The diagnostic port is under the ashtray.
- There is an old and a new version. The old version was built before 10/1996. If the program shows you with the old version a wrong value, try the new version.
- Turn ignition on.
- Connect the Tacho Universal to the OBD II plug and the diagnostic port.
- Select the menu **Audi-A8-A8 old-Diagnosis**
or **Audi-A8-A8 new Diagnosis**
- The Tacho Universal shows you with one of these programs the old value.
- Enter the new value.
- Verify the new value with **OK**

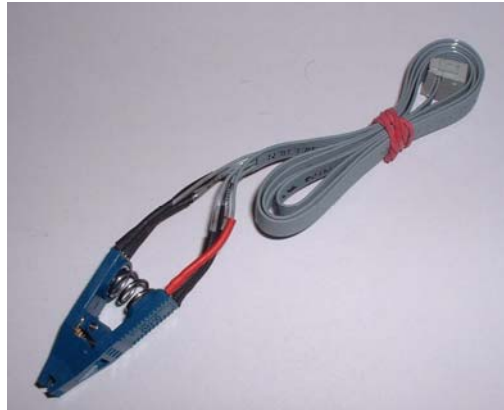
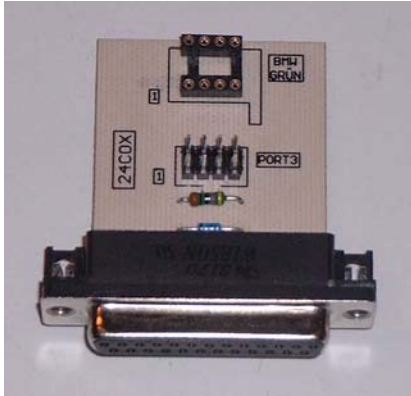
Note:

If the new value is not displayed after programming, try this:

- Turn ignition off.
- Pull out the fuse for the odometer for a few seconds.
- Now the new value should be displayed.

Model A8 / S8 after 1/1999

Use this board and clip:



- Remove the cluster and open it
- Look for the 8 pin chip Chip 24C17.
- Connect the clip to Port 3.
- Put the clip on the chip 24C17 (red on pin 1)
- Select the menu **Audi – A8 – A8 24C17 V1.**
- The Tacho Universal shows you the old value. (if not, select the menu **AUDI- A8- A8 24C17 V2).**
- Select the menu **Adjust KM.**
- Enter the new value.
- Verify the new value with **OK.**

Model TT before model 2000

Diagnostic programming

Use the OBD II -plug:



The diagnostic port near your left knee when you sit on the driver's seat.

- Turn ignition on.
- Connect the Tacho Universal to the OBD II plug and the diagnostic port.
- Select the menu **AUDI-Audi TT-TT Diagnosis.**
- Enter the new value..
- Verify the new value with **OK.**
- For some models you have to enter the old value on demand.

Note:

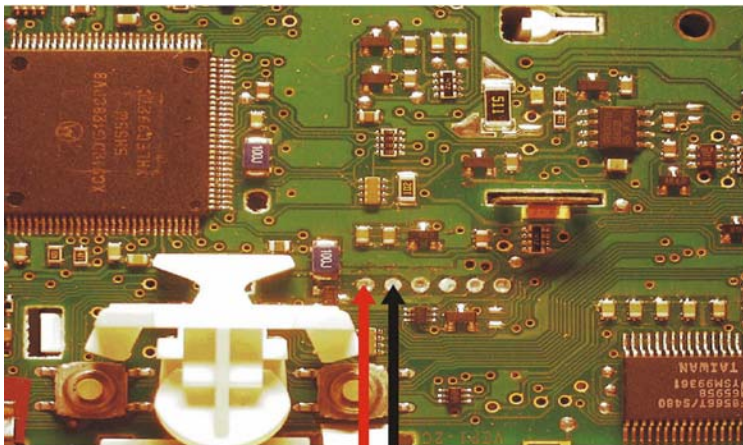
If you cannot change the value, the cluster is model 2000.

Model TT model 2000

Use this plug:



- Remove the cluster and open it.
- Connect the blue and the green plug to the instrument.
- Also connect the black and the red cables like shown in the picture.
- **IMPORTANT: You must not move the black and the red contact when beginning to read until you are ready with programming. A good contact is absolutely necessary.**
- Select the menu **Audi-Audi TT-TT 2000**.
- The Tacho Universal shows you the old value.
- Enter the new value.
- Verify the new value with **OK**.



Testspitze

Note:

If the handheld shows you „out of range“ the contact was bad or the database may be corrupted. For security reasons you cannot program the instrument at this moment.

Normally it will be possible to program again after driving about 100 km.