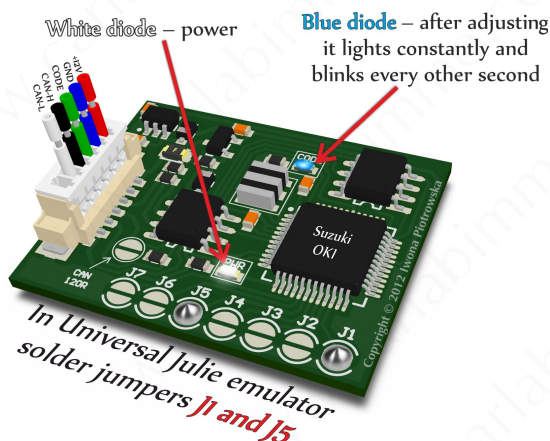
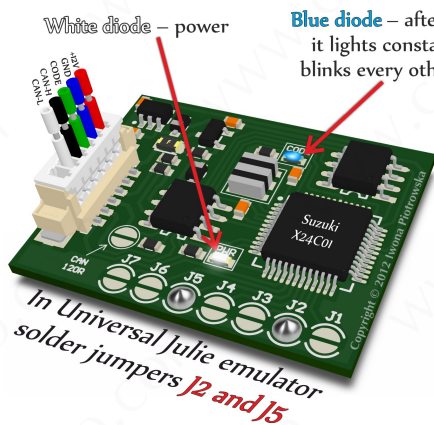




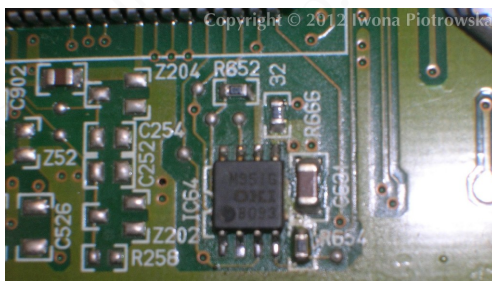
## SUZUKI with X24C01 and OKI memory IMMO EMULATOR



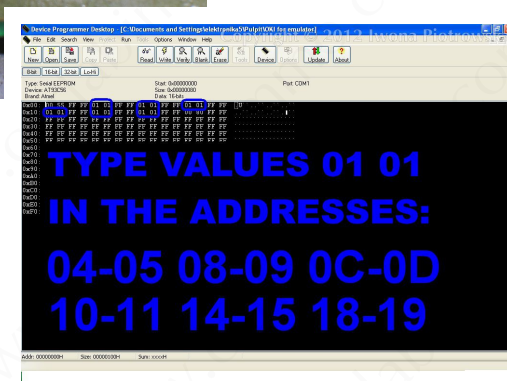
\* Sometimes, OKI and X24C01 programs work interchangeably

## Use

### ECU with OKI memory read as 93LC56 ECU with X24C01 memory



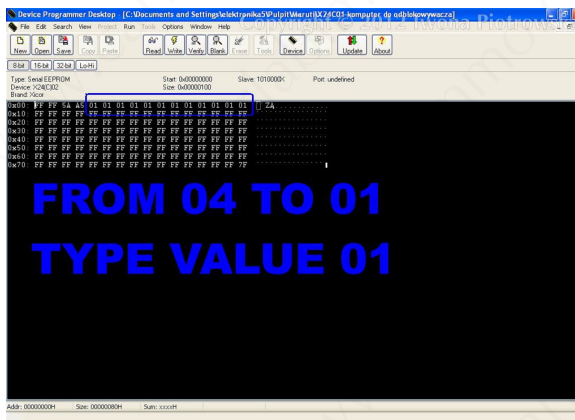
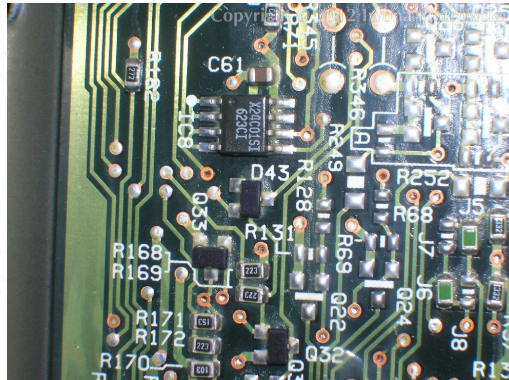
Find OKI eeprom memory,  
read and save as 93LC56.



In OKI eeprom memory  
write 01 01 values in addresses:

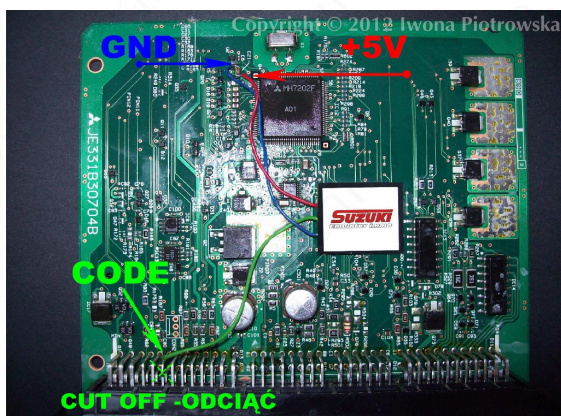
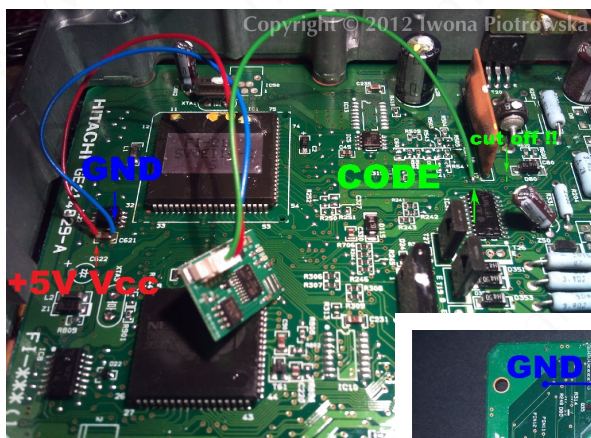
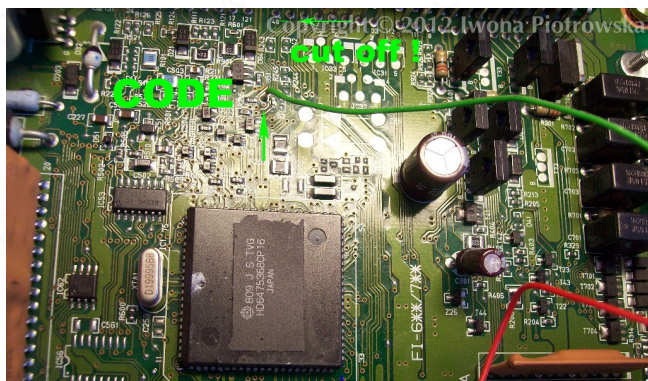
04 – 05    08 – 09    0C – 0D  
10 – 11    14 – 15    18 – 19

Find X24C01 eeprom memory

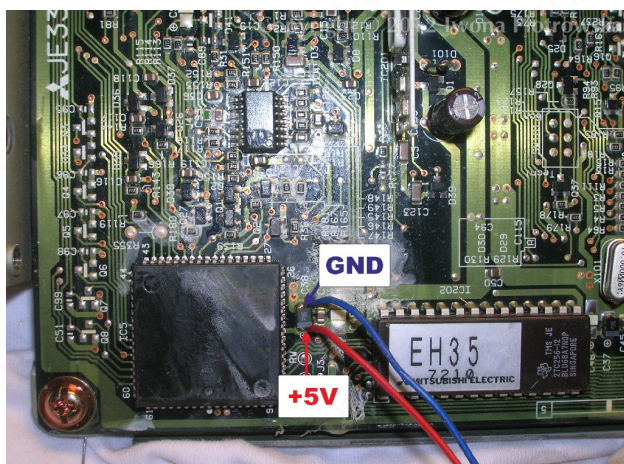
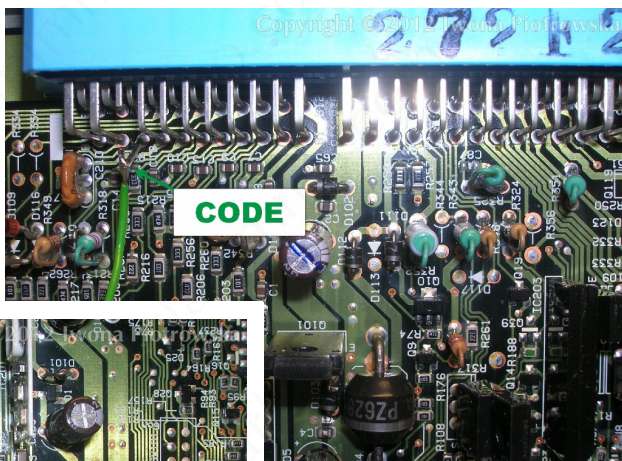
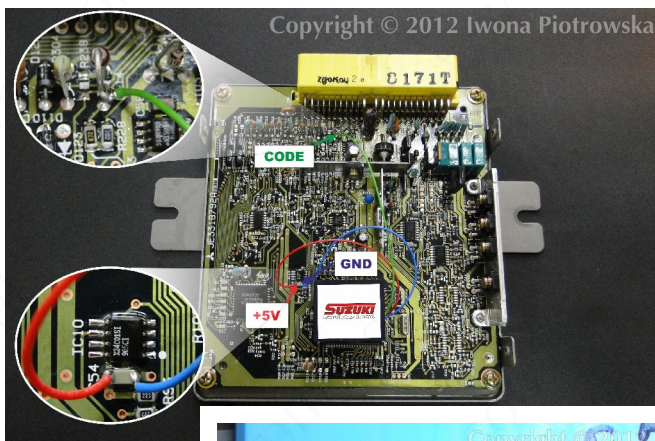


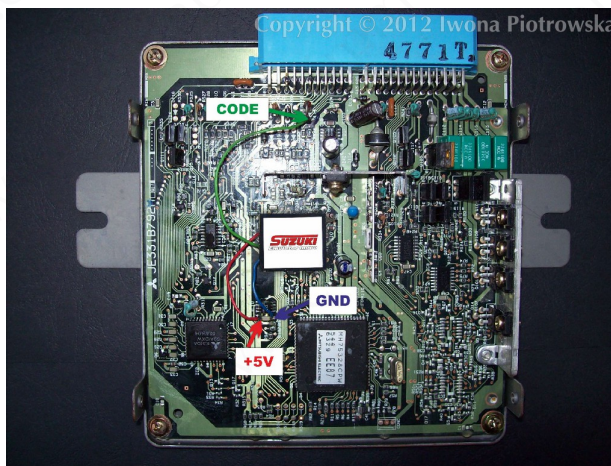
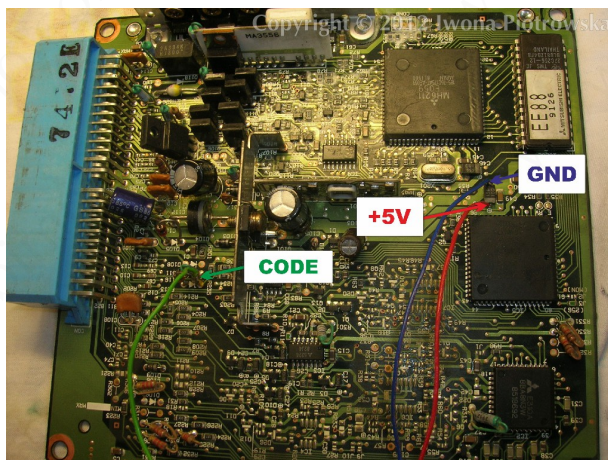
In address from 04 to 0F write 01 value

## Examples of connections









Immo line e.g. socket B pin 15

In different ECU types, the immo line can be in different pins. You check connection between ECU pin and pin 9 of 16-pin OBD socket with a multimeter.

Power supply 5V from capacitor near memory.

### **Warning!!!**

Due to possible construction changes of cars, check signals with multimeter in the ECU plug.

**We state that we are the only authentic authors of this manual. We possess copyright of this publication. All rights reserved. Unauthorized copying, hiring, lending, public performance will be punished!!! Any trials of unauthorized copying, hiring, quoting prohibited!!! Both service and advertisement constitute copyright and they are the subject to the protection in accordance with the Act from 4<sup>th</sup> Feb. 1994 on Copyright and Related Laws (Statute Book no. 24 position 93) and protection on the basis of the Act from 8<sup>th</sup> June 1993 on combating an unfair competition (Statute Book no. 47 position 211)**

**[www.carlabimmo.com](http://www.carlabimmo.com)**

**Last updated 05.09.2014**